



In 1979 Oxfam leads a massive effort to get food aid to Cambodia after the fall of the Khmer Rouge. Following a special John Pilger report on Cambodia and a Blue Peter appeal, Oxfam raised over £3 million to help the millions from going hungry after the fall of the Khmer Rouge's genocidal regime. Unloading the first substantial shipment of Western aid to Cambodia at Kompong Som in 1979. This first barge and those that followed, brought food, seeds, fertiliser, tools, equipment and vehicles financed by the Oxfam-led consortium of agencies.

SUPPORT EMERGENCY RESPONSE

All around the world, Oxfam is known for its ability in emergency response. In Cambodia, Oxfam has supported every major response and recovery in the country's recent history. While Oxfam still maintains this ability, our emphasis has increasingly moved toward improved coordination between humanitarian actors including government agencies, increasing community based preparedness, and strengthening overall contingency planning.



www.cambodia.oxfam.org

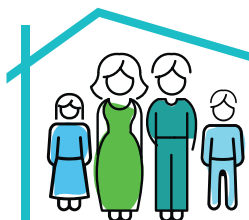
OXFAM

References

DISASTER PREPAREDNESS

Oxfam combines proven methodologies to assess disaster risks, devise better disaster proof programs and upholds principles of 'DO NO HARM'. This participative approach leads to stronger community resilience and integrated disaster risk reduction with genuine long-term gains.

THAI BORDER TENSIONS



In 2011, Thai border tensions led to displacement of many people to temporary shelters, causing health concerns, limited access to food and interrupted school attendance. Working with local government, Oxfam have provided emergency assistance to 1,000 affected households (3,500 women) on Water Sanitation and Hygiene (WASH) and Non-food items in Oddar Meanchey.

TYPHOON KETSANA

Oxfam was part of a national response and stepped up to support 19,400 households on Water, Sanitation, and Hygiene (WASH) and Emergency Food Sustainable Livelihood (EFSL).



SUPPORT KAMPUCHEA POST WAR RECOVERY



In 1979, after the collapse of the Khmer Rouge Regime, Oxfam launched a massive humanitarian support to Cambodia focusing on WASH, Emergency Food Sustainable Livelihood (EFSL) and small-scale infrastructure development for rural access.

